



Pag. 1 - Firenze



Pag. 2 Cannes



Pag. 3 Koln



Pag. 4 Sevilla



Pag. 5 Zurich

# Flexibility, Control and Security:

## Solution for filtering access to rooms. Protect assets and people.

Wide range of indoor and outdoor solutions to protect property, people and valuables and to control and regulate the flow of people.

The product range is designed to create safe environments for use with various applications, be they low or high risk sites. Includes revolving doors and automatic security doors. As the required security levels vary not only from site to site, but also at different points within each site, our security systems provide the right levels of protection for sensitive areas, without compromising people's freedom of movement authorized or the efficiency of operations within the site. They provide protection against vandalism and manual attacks, as well as being ballistic. Consisting of at least 2 doors, one of which can only be opened when the other is closed, airlocks extend the security perimeter of a site, ensuring that users are kept within a safe space while carrying out tasks.

### APPLICATION

- Public administrations
- Company headquarters
- Casinos
- Jewellers
- Hotel industry, etc.

### GLOBAL EXPERIENCE

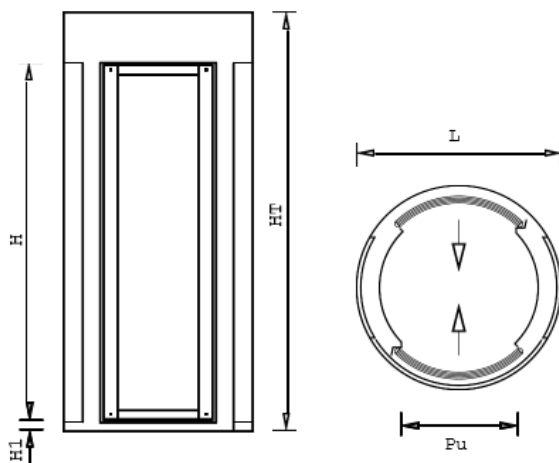
- Leading company in manufacturing and integrating security equipment at high-risk sites
- More than 50 years' experience
- Local and international support
- High production and quality levels

# Firenze FLR

## Self Managed Door with Automatic Opening

### ADVANTAGES

- Round revolving door unit featuring a pure design
- Installation on finished floor
- Pleasantly designed and widely glazed cylindrical enbloc with set-in single transit system, particularly recommended for access control installations Fast access flow
- 30/10 mild steel structure, painted with highly shock and corrosion proof products, also available with stainless steel satin finish.
- Weight control system allowing only one transit at a time.
- Accident prevention safety in compliance with all standards in force.
- Interfacing with external peripherals, badge readers, biometric system, Chip cards, digital video recording system, etc. on request.



MODELLO	HT (mm)	H (mm)	H1 (mm)	L (mm)	Pu (mm)
FLR 01	2400	2000	60	1050	600
FLR 02	2400	2000	60	1150	640
FLR 03	2400	2000	60	1280	740
FLR 04	2400	2000	60	1550	900

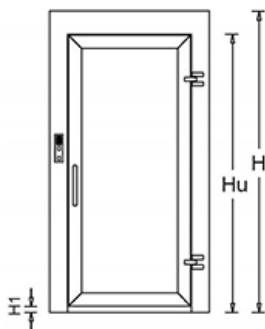
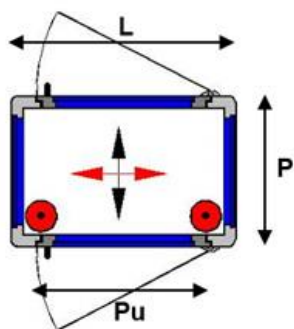
- Battery life: 4 hours
- Power supply: 220÷110Vac 50-60Hz
- Power: 400 Watt
- Weight: 380/400 Kg
- Atmospheric temperature: -10/+55°C
- Transit speed: 4 Trans/min

# Cannes CEQ

**Manual Opening Security Door, interlocked by electric lock or pneumatic pistons. Built-in metal detector**

## ADVANTAGES

- Pleasantly designed enbloc with 30/10 mild steel structure, painted with highly shock and corrosion proof products, also available with external side door made of steel or anamagnetic materia for metal detector perfect integration. Wide range of model and equipments.
- Shock-proof and bullet-proof side and door glasses.
- Sensor for person presence signalling
- Weight control system allowing only one transit at time.
- Highly discrimination metal detector set into the structure.
- Accident prevention safety in compliance with all standards in force.
- 90° entrance on request.
- Interfacing with external peripherals, badge readers, biometric system, Chip cards, digital video recording system, etc. on request.



Burglary  
resistance



Ballistic  
resistance



Energy  
savings



Modello	L (mm)	P (mm)	Pu (mm)	H (mm)	Hu (mm)	H1 (mm)
CEQ01(*)	1100	720	680	2250	2000	35
CEQ02	1100	1050	680	2250	2000	35
CEQ03	1280	1050	900	2250	2000	35
CEQ04	1280	1530	900	2250	2000	35
CEQ05	1280	720	900	2250	2000	35

(\*) - Standard

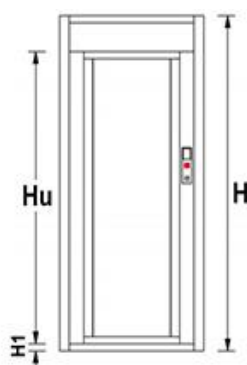
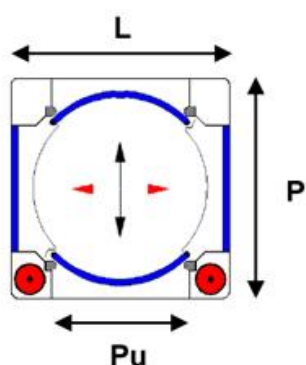
- Battery life: 4 hours
- Power supply: 220÷110Vac 50-60Hz
- Power: 400 Watt
- Weight: 550/800 Kg
- Atmospheric temperature: -10/+55°C
- Transit speed: 6 Trans/min

# KoIn CGN

## Self Managed Security Door with automatic Opening

### ADVANTAGES

- Enbloc with 30/10 mild steel structure, painted with highly shock and corrosion proof products.
- Shock-proof and bullet-proof side and door glasses.
- Weight control system allowing only one transit at time.
- Highly discrimination metal detector set into the structure.
- Accident prevention safety in compliance with all standards in force.
- 90° entrance on request.
- The security door inside cage, formed by the doors, floor, ceiling and side walls, hangs from a weight sensor. The particular solution allows to authorize the entrance to only one person at time and automatically check inside the security door to determine if, after any metal detector alarm, a gun has been left on purpose.



Burglary  
resistance



Ballistic  
resistance



Energy  
savings



Modello	L (mm)	P (mm)	Pu (mm)	H (mm)	Hu (mm)	H1 (mm)
CGN01(*)	1050	1050	600	2400	2000	60
CGN02	1150	1150	650	2400	2000	60
CGN03	1280	1280	700	2400	2000	60

(\*) Standard

- Battery life: 4 hours
- Power supply: 220÷110Vac 50-60Hz
- Power: 400 Watt
- Weight: 750/1000 Kg
- Atmospheric temperature: -10/+55°C
- Transit speed: 4 Trans/min

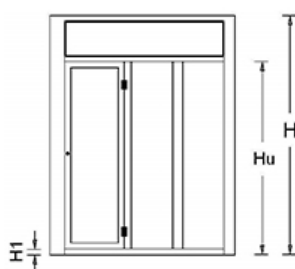
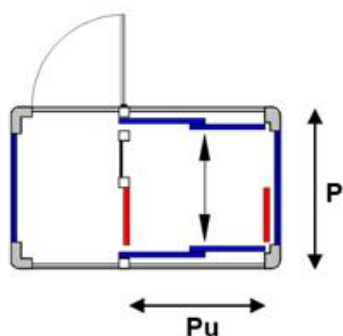


# Sevilla SVQ

## Self Managed Security Door with automatic Opening

### ADVANTAGES

- The comfort of a standard entrance with automatic doors with all the technical features of an antirobbery access, easy to install and to integrate in all environments.
- Enbloc with 30/10 mild steel structure, painted with highly shock and corrosion proof products.
- Shock-proof and bullet-proof side and door glasses.
- One transit at the time and inside floor checking
- Highly discriminating metal detector sei into the structure.
- Accident prevention safety in compliance with all standards in force.
- Interfacing with external peripherals, badge readers, biometric systems, etc. on request
- Useful passage: 70 cm - Version PNA01
- Useful passage: 90 cm - Version PNA01



Burglary  
resistance



Ballistic  
resistance



Energy  
savings



Modello	L (mm)	P (mm)	Pu (mm)	H (mm)	Hu (mm)	H1 (mm)
SVQ01(*)	1230	1080	720	2350	1950	40
SVQ02	1500	1300	900	2350	1950	40

(\*) Standard

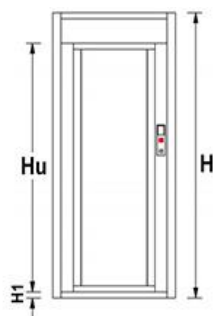
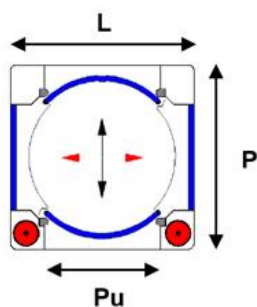
- Battery life: 4 hours
- Power supply: 220÷110Vac 50-60Hz
- Power: 400 Watt
- Weight: 850/1000 Kg
- Atmospheric temperature: -10/+55°C
- Transit speed: 6 Trans/min

# Zurich ZRH

## Self Managed Security Door with automatic Opening

### ADVANTAGES

- Enbloc at protection level, particularly recommended for environments at high risk.
- 30/10 and 40/10 mild steel doors and loading structure, able to guarantee a 60/10 and 80/10 perimetral protection, thanks to its exclusive assembling, painted with highly shock and corrosion proof products. Also available as non assembled kit for installation in particular environments.
- Weight control system allowing only one transit at a time
- Accident prevention safety in compliance with all standards in force
- Emergency prevention safety in compliance with all standards in force
- 90° entrance on request
- Interfacing with external peripherals, badge, readers, biometric systems, chip cards, digital video recording systems, etc. on request.



Modello	L (mm)	P (mm)	Pu (mm)	H (mm)	Hu (mm)	H1 (mm)
ZRH01(*)	1050	1050	600	2400	2000	60
ZRH02	1150	1150	650	2400	2000	60

(\*) Standard

- Battery life: 4 hours
- Power supply: 220÷110Vac 50-60Hz
- Power: 400 Watt
- Weight: 750/900 Kg
- Atmospheric temperature: -10/+55°C
- Transit speed: 4 Trans/min

We are highly specialized in:  
**HIGH SECURITY DOORS, WINDOWS &  
PARTITIONS TO PROTECT BUILDINGS**

